

Residual Solvents Analysis

1. Analytical Condition

YL 6500 Series

Oven : 35°C(8min)->5°C/min->150°C(10min)

Column : HP-5(30m*0.32mm*1.0um)

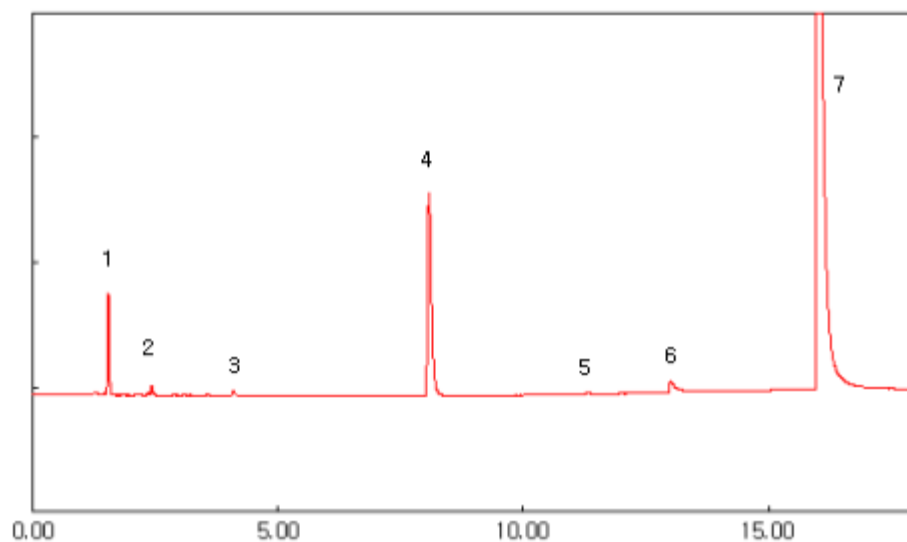
Carrier gas : He, 3ml/min (Split ratio 10:1)

Injector : Capillary 230°C

Detector : FID 250°C

Headspace : 80 °C, 60min heating, Gas 1ml injection

2. Chromatogram



1. Methanol
2. Acetone
3. Ethyl Acetate
4. 1,4-Dioxane
5. Pyridine
6. DMF
7. DMSO

